

Mushrooms nomenclatural novelties no. 15

Effectively published 2018-02-09 06:30:34 (ISSN 2560-9548)

Author : Serge Audet

Lentoporiaceae Audet, fam. nov.

IF554249

Basidiomata annual to perennial, resupinate often widely effused. Pore surface white or cream. Hyphal system trimitic, generative hyphae with clamps, thin-walled, rarely branched, skeletal hyphae thick-walled, large, rarely branched, IKI+, dissolving in KOH when dry, binding hyphae, thin to thick-walled, ramified. Cystidia absent. Basidiospores oblong to oblong-ellipsoid, hyaline, smooth, IKI-. Grows on gymnosperm wood. Causing brown decay.

Holotype : *Lentoporia* Audet, Mushrooms nomenclatural novelties 5: 1 (2017).

Comment : In Justo et al. 2017 *Amyloporia* cf. *stratosa* appear close to *Amyloporia carbonica* but have some major microscopic differences with it. Unpublished 28S (LSU) phylotree containing large dataset of *Antrodia* s.l. show that *Amyloporia* cf. *stratosa* is closest the group containing *crassa* than *carbonica*. See personal phylotree below about the support of this new family

Table 2 from figure 2

| Taxon | Phylotree | SSU (18S) Genbank |
|------------------------------------|-------------|-------------------|
| <i>Adustoporia sinuosa</i> | Asinu6786 | AY336786 |
| <i>Amyloporia xantha</i> | Axantha5919 | KR605919 |
| <i>Fibroporia albicans</i> | Falb0524 | KU550524 |
| <i>Fibroporia bambusae</i> | Fbamb0527 | KU550527 |
| <i>Fibroporia bohemica</i> | Fbohe0529 | KU550529 |
| <i>Fibroporia ceracea</i> | Fcer0530 | KU550530 |
| <i>Fibroporia citrina</i> | Fcit0533 | KU550533 |
| <i>Fibroporia radiculosa</i> | Fradi0538 | KU550538 |
| <i>Fibroporia vaillantii</i> | Avail8583 | AJ488583 |
| <i>Fomitopsis pinicola</i> | Fpinic5858 | KR605858 |
| <i>Lentoporia carbonica</i> | Acarb9059 | U59059 |
| <i>Pseudofibroporia citrinella</i> | Pcitr0540 | KU550540 |

Table 3 from figure 3

| Taxon | Phylotree | Genbank | | | |
|------------------------------|-------------|-----------|----------|----------|----------|
| | | SSU (18S) | LSU | RPB1 | RPB2 |
| <i>Adustoporia sinuosa</i> | Asinuosa | AJ488906 | EU232288 | KY949018 | KT895894 |
| <i>Amyloporia carbonica</i> | Acarbonica | U59059 | KR605755 | KY948985 | AY218470 |
| <i>Amyloporia xantha</i> | Axantha | AY336775 | EU232228 | KY949017 | KP134912 |
| <i>Fibroporia gossypium</i> | Fgossypium | KU550534 | EU232298 | KY949029 | KT895902 |
| <i>Fibroporia radiculosa</i> | Fradiculosa | KR605922 | KC585167 | KY949034 | KT895899 |
| <i>Fomitopsis pinicola</i> | Fpinicola | KR605858 | EU232290 | AY864874 | KR610782 |

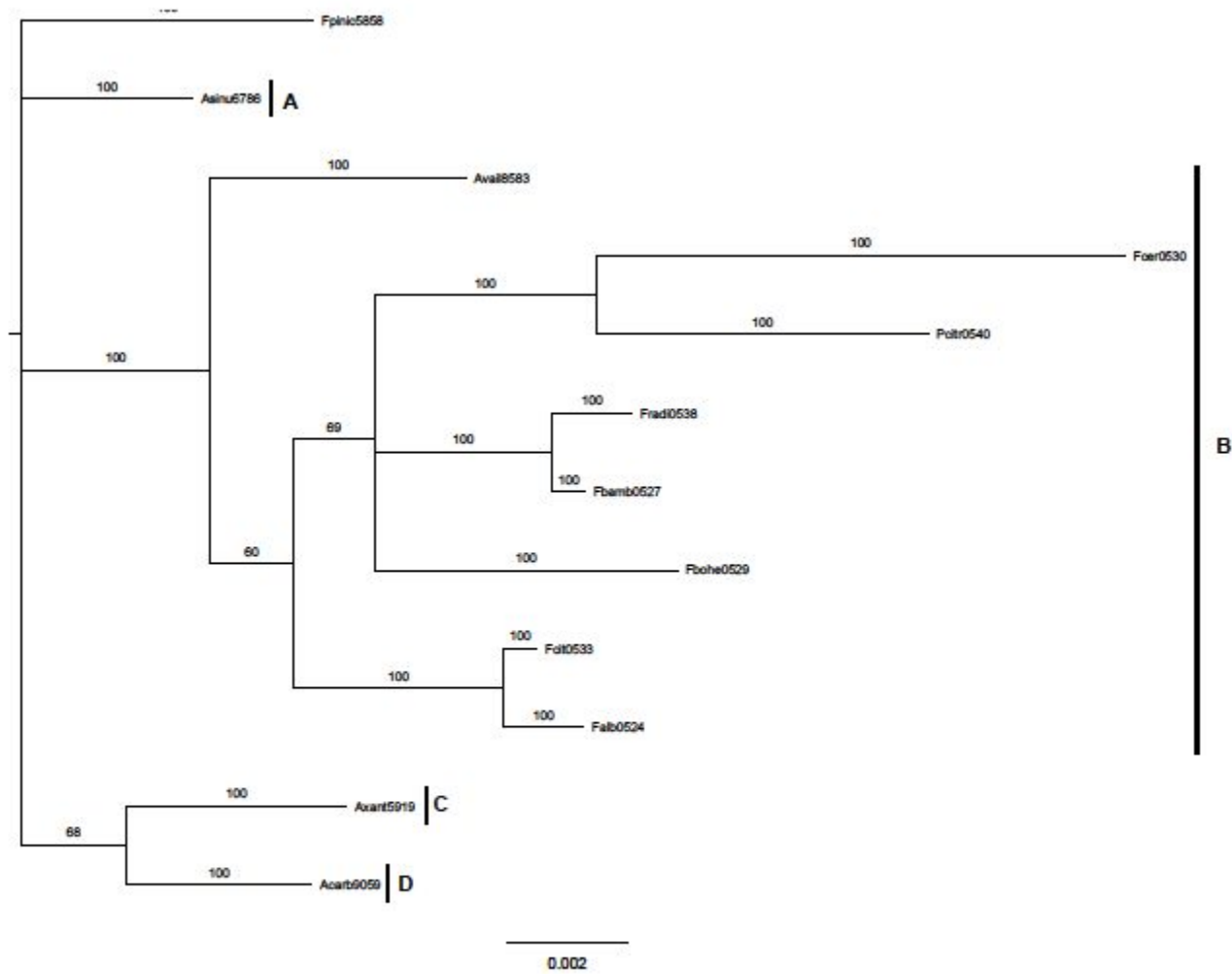


Figure 2: Strict consensus phylogree of small subunit ribosomal RNA gene (18S) calculated by the MrBayes software (Ronquist et al. 2015; 1 000 000 generations). A: *Adustoporiaceae*; B: *Fibroporiaceae*; C: *Amyloporiaceae*; D: *Lentoporiaceae*; outgroup: *Fpinic5858*

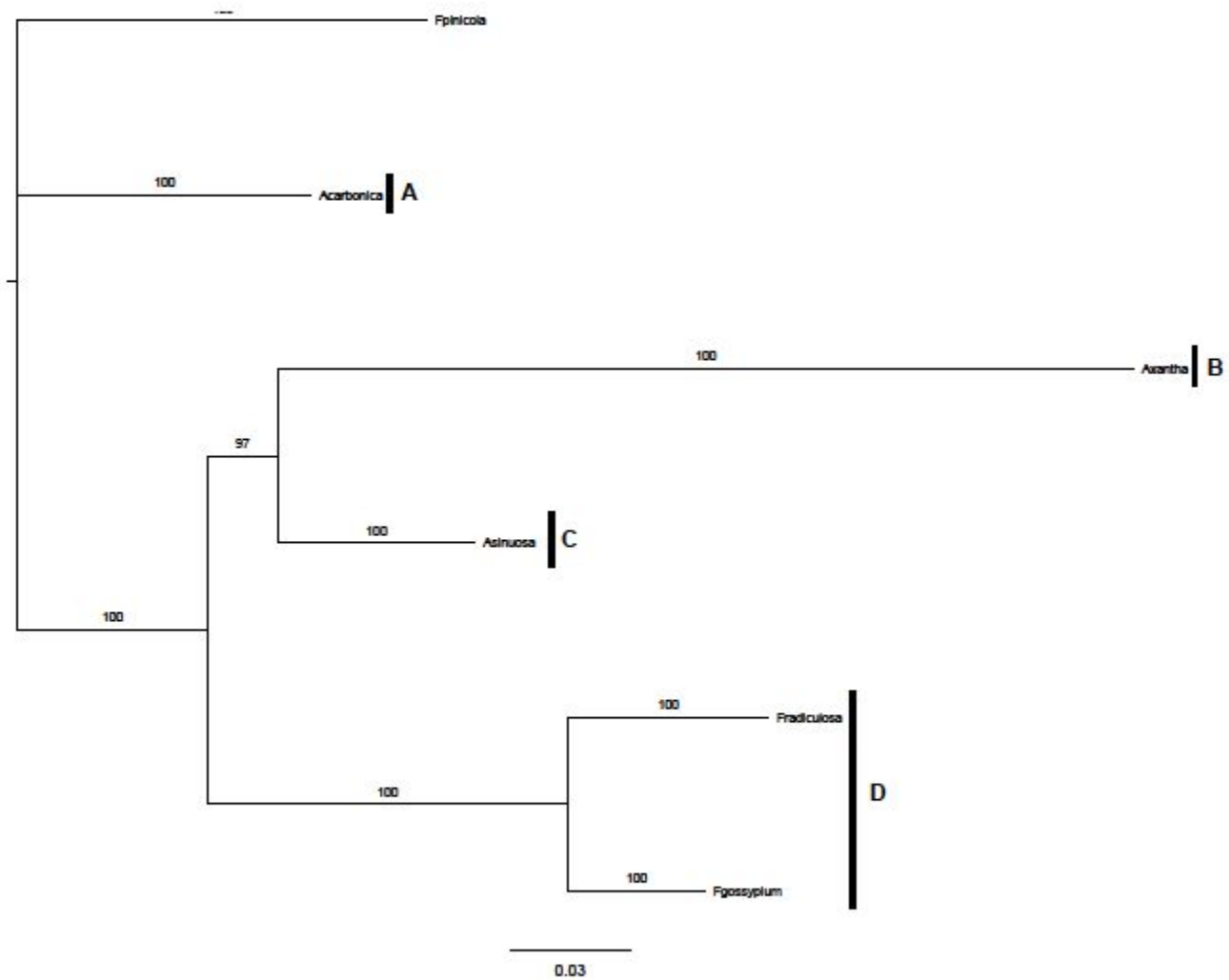


Figure 3: Strict consensus phylogeny from multiple loci (18S+LSU+RPB1+RPB2) calculated by the MrBayes software (Ronquist et al. 2015; 1 000 000 generations). A: *Lentoporiaceae*; B: *Amytoporiaceae*; C: *Adustoporiaceae*; D: *Fibroporiaceae*; outgroup: *Fpinicola*