

Mushrooms nomenclatural novelties no. 17

Effectively published 2018-02-09 06:31:59 (ISSN 2560-9548)

Author : Serge Audet

Rhodoniaceae Audet, fam. nov.

IF554250

Basidiomata annual, resupinate, margin indistinct, matted or fimbriate, narrow to almost lacking. Pore surface white, cream to gray, pink or brownish when fresh, pores circular to angular, dissepiments thin, entire to lacerate. Hyphal system tramal monomitic, dimitic in context and in the wood, CB-, generative hyphae mostly with clamps, thin-walled to thick-walled, sometimes branched, generative hyphae reported moderately amyloid in Melzer's reagent. Rarely skeletal hyphae in the subiculum or mycelium in the wood is composed of skeletal hyphae and some conjunctive with long branches. Gloeoplerous hyphae present or not. Cystidia or cystidioles absent. Basidiospores cylindrical sometimes slightly curved, thin-walled, hyaline, smooth, uninucleated, IKI-, CB-, 2-3 μm wide. Grows on angiosperm or gymnosperm wood. Causing brown decay. Nuclear behavior heterocytic and mating system bipolar heterothallic.

Holotype : *Rhodon* Niemelä, *Karstenia* 45(2): 79 (2005).

Comment: See personal phylotree below about the support of this new family.

Table 5 from figure 5

Taxon	Phylotree	SSU (18S) Genbank
<i>Adustoporia sinuosa</i>	Asinu6786	AY336786
<i>Amyloporia xantha</i>	Axant5919	KR605919
<i>Amyloporia xantha</i>	Axant8584	AJ488584
<i>Amyloporia xantha</i>	Axant6775	AY336775
<i>Fibroporia albicans</i>	Falb0524	KU550524
<i>Fibroporia bambusae</i>	Fbamb0527	KU550527
<i>Fibroporia bohemica</i>	Fbohe0529	KU550529
<i>Fibroporia ceracea</i>	Fcer0530	KU550530
<i>Fibroporia citrina</i>	Fcit0533	KU550533
<i>Fibroporia gossypium</i>	Fgoss0534	KU550534
<i>Fibroporia radiculosa</i>	Fradi0538	KU550538
<i>Fibroporia vaillantii</i>	Avail8583	AJ488583
<i>Fomitopsis pinicola</i>	Fpinic5858	KR605858
<i>Laricifomes officinalis</i>	Foffic5929	KR605929
<i>Lentoporia carbonica</i>	Acarb9059	U59059
<i>Piptoporellus hainanensis</i>	Fomit5904	KR605904
<i>Postia obliqua</i>	Pobliq1145	KX901145
<i>Postia rancida</i>	Pranc1148	KX901148
<i>Postia subplacenta</i>	Psubp1150	KX901150
<i>Pseudofibroporia citrinella</i>	Pcitr0540	KU550540
<i>Rhodonina placenta</i>	Pplac0649	KZ110649 (1052-2730 bp)

Table 6 from figure 6

Taxon	Phylotree	Genbank	
		LSU	RPB2
<i>Adustoporia sinuosa</i>	Asinu5070	KC585070	KT895894
<i>Amyloporia carbonica</i>	Acarb7844	AF287844	AY218470
<i>Amyloporia subxantha</i>	Asubx8826	KT968826	KT895897
<i>Amyloporia xantha</i>	Axant2284	EU232284	KP134912
<i>Cerrena unicolor</i>	Cunic5209	KP135209	KP134968
<i>Fibroporia albicans</i>	Falb0485	KU550485	KR610838
<i>Fibroporia bambusae</i>	Fbamb0488	KU550488	KU55054
<i>Fibroporia ceracea</i>	Fcera0490	KU550490	KU550547
<i>Fibroporia citrina</i>	Fcit0492	KU550492	KU550551
<i>Fibroporia gossypium</i>	Agosy2298	EU232298	KU550550
<i>Fibroporia radiculosa</i>	Fradic5167	KC585167	KT895899
<i>Postia rancida</i>	Pranc0999	KX900999	KX901242
<i>Pseudofibroporia citrinella</i>	Pscit0500	KU550500	KU550556
<i>Rhodonina placenta</i>	Pplac2285	KC585223	KT893746

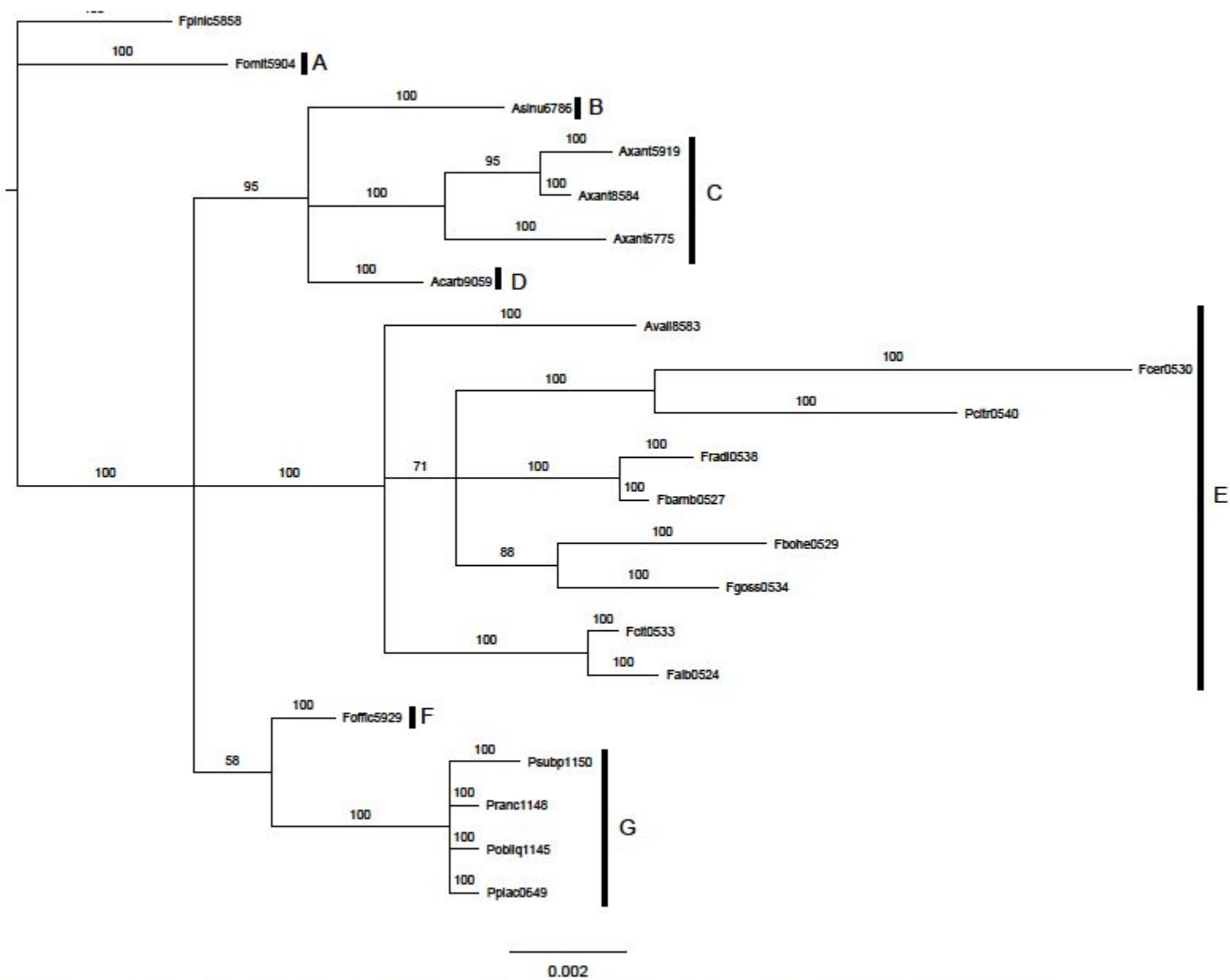


Figure 5: Strict consensus phylogree of small subunit ribosomal RNA gene (18S) calculated by the MrBayes software (Ronquist et al. 2015; 1 000 000 generations). A: *Piptoporellus*; B: *Adustoporiaceae*; C: *Amyloporiaceae*; D: *Lentoporiaceae*; E: *Fibroporiaceae*; F: *Laricifomitaceae*; G: *Rhodoniaceae*; outgroup: *Fpinic5858*

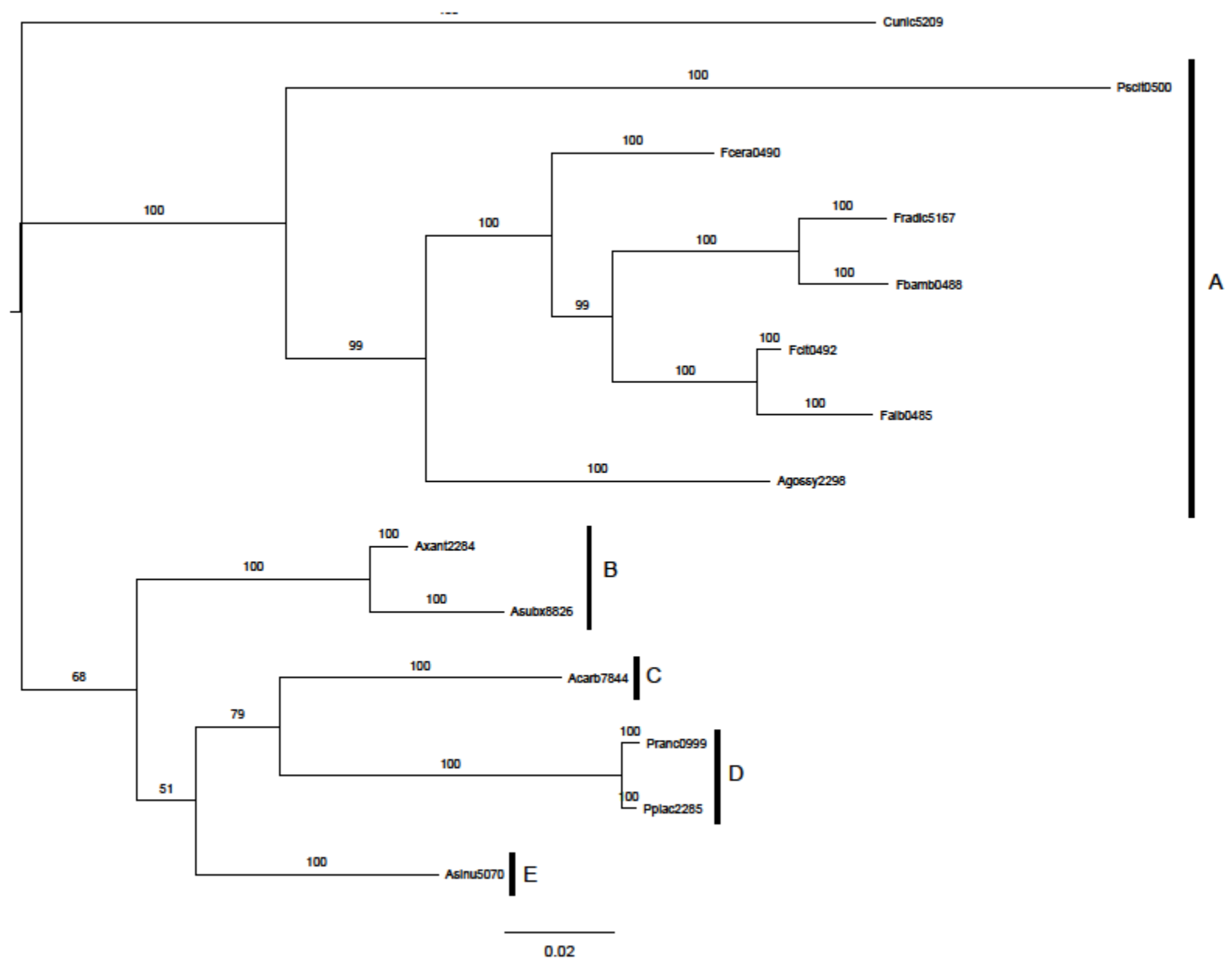


Figure 6: Strict consensus phylogree of LSU +RPB2 calculated by the MrBayes software (Ronquist et al. 2015; 1 000 000 generations). A: *Fibroporiaceae*; B: *Amyloporiaceae*; C: *Lentoporiaceae*; D: *Rhodontiaceae*; E: *Adustoporiaceae*; outgroup: *Cunic5209*